



Mc Mahon Group.com

A & S MC MAHON COMMUNICATIONS LIMITED

Training, Contracting, Equipment



Access & Rescue

CRUSHEEN, COUNTY, CLARE, IRELAND

2012

# A & S Mc Mahon Group Industrial Access Services



# SPRAT<sup>®</sup>

Society of Professional Rope Access Technicians



[www.aandsmcmahongroup.com](http://www.aandsmcmahongroup.com)

European Brochure Only

A & S Mc Mahon Communications Limited ©

A & S Mc Mahon Group

1/1/2012

## Contents

1. Who Are We
2. Why Us
3. Why Rope Access
4. Corporate Social Responsibility
5. Leadership & Governance
6. Company Organization Chart
7. The Board
8. Complaints Procedure
9. Company Policy
10. Environmental Policy Statement
11. Culture
12. Pro-Activity
13. Diversity
14. Partnership
15. Management Team
16. Health & Safety
17. Rope Access Program
18. Training System
19. Equipment System
20. Equipment Inspectors
21. Supervision
22. Job Planning
23. Environmental Sustainability
24. Quality
25. Summery
26. Our Services
27. Inspection Services
28. Height Safety Services
29. Protective Coating
30. Specialist Access
31. Remedial Engineering
32. NDT Testing
33. Rescue Cover
34. Film & TV Services
35. Training Services
36. Contact Info



## WHO ARE WE

© A & S Mc Mahon Communications Limited<sup>®</sup> (A & S Mc Mahon Group) Over the past decade A & S Mc Mahon Communications Limited has developed one of the most comprehensive and unrivalled work approach, offering excellent inspection, access and lifting system solutions across Ireland. At the same time, A & S Mc Mahon Communications Limited maintenance division has grown rapidly in tandem with the need for Specialist access in the industry.

Our Rope Access specialists receive high quality training, complete considerable amount of diverse tasks and undergo a strict selection process prior to taking their place as a part of our team. All Employees are independently assessed and qualified by SPRAT, IRATA & Rescue 3. Re-assessment takes place every three years.

Teams are selected in accordance with work specific requirements and necessity for particular professional skills. We use a wide range of industrial safety and rope access EN/BS certified equipment. When it comes to inspections, our technical team uses professional photo and video gear; they are able to read technical drawings and do basic calculations.

A & S Mc Mahon Communications Limited and its Subsidiaries strictly complies with the Industry requirements for Safety, Quality, Training, and Work Practices. We use back-up fall arrest systems to eliminate danger in case of unlikely failure of the primary means of support. All teams have current Fetac Occupational First Aid Certificates, First Responder Certificates, Medic Licence, Paramedics Licence, Confined spaces training & Rescue, Safe Pass, CSCS training, and SPRAT, IRATA Level 1, Level 2, and Level 3 qualifications & Instructors, Rope Rescue Instructors by Rescue 3.

An extensive knowledge of Current Legislation, Codes of Practice and Health & Safety guidelines not only enables us to incorporate the correct Safety Standards into our projects but also to advise our clients on the best way to adhere to such regulations.

When you are a partner with US, you get more than just effective, efficient and safe services. You reap the rewards of our integrated, innovative and international approach. And you access the very best in teams of people, processes and technologies.

## WHY US?

At A & S Mc Mahon Group we are committed to delivering an excellent service at a great price that never compromises health and safety and always ensures best environmental practice.

As the wind market matures our long experience in the sector gives A & S Mc Mahon Group the edge in offering improved 'through life' asset management because of our deep and long standing relationships with major equipment suppliers. This allows us to offer enhanced support and to improve asset performance. We improve the predictability of the asset's output and offer enhanced performance analysis. Offshore A & S Mc Mahon Group is well positioned to support emerging developments and are engaged in developing a range of services to support major projects currently underway. A & S Mc Mahon Group offers renewable energy asset owners a one-stop shop solution. We offer full operation and maintenance services for completed plant throughout the Ireland, UK, Europe & USA. In

Sector like Energy, inland & Offshore, Building Maintenance & Repair, Cleaning, NDT Testing, Film & TV Expeditions, and finally Training. A & S Mc Mahon Group carries Full Public Liability Insurance on all of its contracts we also adhere to current international safety standards and Local Safety Standards where ever we work.

## WHY ROPE ACCESS?

Used professionally, rope-assisted work procedures are not dangerous and, according to statistics, are even safer than traditional high-altitude access techniques involving scaffolding. In our company, rope-assisted work techniques are only conducted by qualified and certified high-altitude workers on the basis of currently valid safety regulations as formulated by the professional association of rope-access techniques SPRAT and IRATA. We exclusively use tested equipment which is in conformity with all relevant DIN and EC standards. Working At Height is certified and registered under supplier number 712164 to the Utility Vendors Data Base (UVDB) by Achilles in December 2011. Achilles identifies, evaluates, and monitors supplier information on behalf of major organizations worldwide. It builds and supports supply chain communities in many industry sectors, creating unique and valuable global networks. Achilles' services reduce risk in the supply chain and create new opportunities for business for both buyers and suppliers.

## CORPORATE SOCIAL RESPONSIBILITY

Doing business globally gives us access to some of the world's richest and poorest societies – A & S Mc Mahon Group operates within the Renewable Energy sector, the Construction Sector and Bio-pharmaceutical sectors to name but a few. With that access, comes the many questions related to the challenges of a global outsourcing company operating as a services provider and the corporate social responsibility to respect human rights, the environment, energy resources and social standards.

A & S Mc Mahon Group is a diverse group of bright and driven individuals who have a sense of citizenship, a spirit for innovation. Our people are in a strong position to play a significant role in the protection of environmental, social and corporate governance standards within the communities in which we operate. We've integrated these standards into our management systems which we believe can be a lever for influencing corporate behaviour around us.

Not only that, A & S Mc Mahon Group actively supports green initiatives and local and international efforts in line with our business objectives to widen our sphere of influence. Our managers and employees at ground level are aware of the often delicate and complex local picture - we've learned that engaging directly with communities we touch can open up whole new avenues of collaboration on such issues.

## LEADERSHIP & GOVERNANCE

### LEADERSHIP

The A & S Mc Mahon Group's leadership team is exclusively focused on developing and delivering engineering support services which help enterprises improve their operational efficiency, acquire and retain new customers, and enhance competitive advantage.

### GOVERNANCE

Our company succeeds because we understand and meet the expectations of our customers. Our professional approach to governance allows us to achieve this while ensuring good management practices and diligent consideration of risks and rewards:

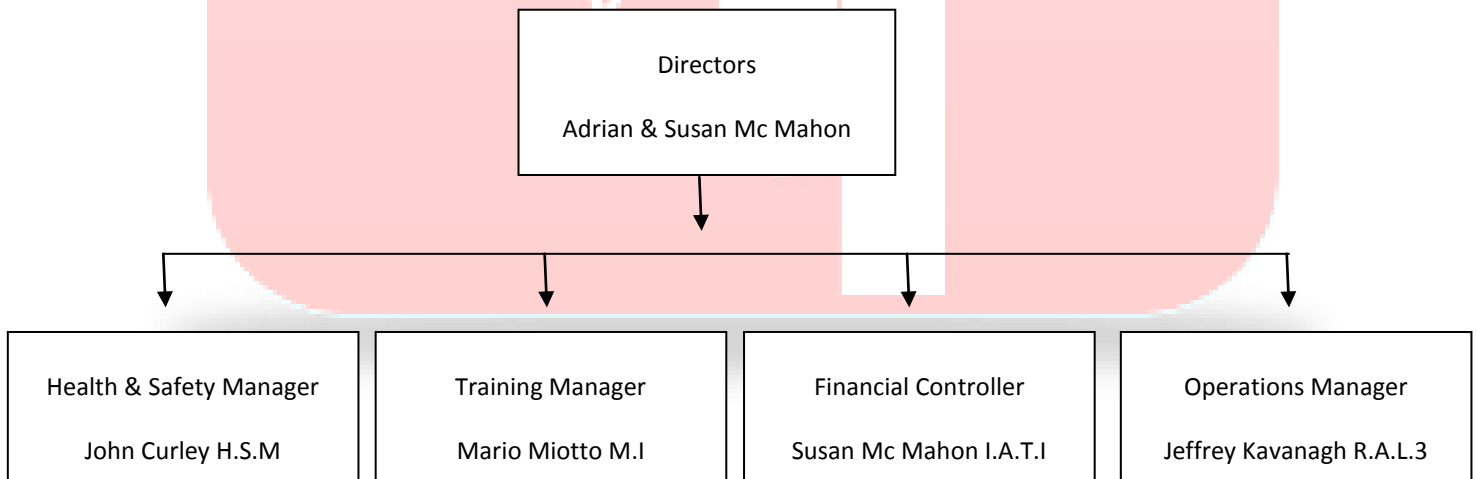
### GOVERNANCE PRINCIPLES

- Foster an entrepreneurial culture
- Enable our people to excel

### BUILD TRUST AND RESPECT

- Ensure that everything we do adds value.
- Integrity is our prime equity - never compromise it.
- Treat everyone with dignity and respect.
- Demonstrate leadership; excel in knowledge; inspire others.
- Innovate, test and evaluate. Be open to new ideas.

## COMPANY ORGANIZATION CHART



## THE BOARD

The A & S Mc Mahon Group Directors focuses on areas important to our Personnel, namely strategy, risk management and people. A good working environment we believe is important to all our staff. In a competitive industry, we have a very positive image in the market place, reputation for delivering a quality work, having a highly skilled, well equipped work force, excellent customer care and Service delivery. Our success to date has been due to the effort and ability of our staff that deliver first time, every time to our customers. The results of these efforts are clear when you consider the speed of our growth and expansion. A & S Mc Mahon Group will draw from the experience gained by all of our staff. We fully appreciate our responsibility in maintaining a culture where all staff are treated fairly and are adequately rewarded for any work undertaken. We value and intend to continue our close working relations.

## COMPLAINTS PROSEDURE

If, as a Company/Client to A & S Mc Mahon Group, you are not happy with the quality of the service you have received from RAI, or wish to complain about any Issue, you should contact us directly. We welcome all feedback and will deal with your complaints/queries/suggestions in a timely and confidential manner.

The steps to follow are set out below:

- Step 1: Make direct contact (in writing/by telephone/e-mail) with the person/section with whom you have been dealing in A & S Mc Mahon Group. In A & S Mc Mahon Group outline in as much detail as possible the nature of your complaint.
- Step 2: If you are not satisfied with the response received from the above, you should contact:

Susan Mc Mahon,  
Corporate Services Section,  
A & S Mc Mahon Group  
Crusheen  
Co. Clare  
Tel: (065) 6890990

- Step 3: If you are still not satisfied with the response you receive you may contact Mr. Adrian Mc Mahon, he will give further consideration to your complaint:

Mr. Adrian Mc Mahon,  
Company Executive Officer  
Corporate Services Section,  
A & S Mc Mahon Group  
Crusheen  
Co. Clare  
Tel: (065) 6890990

- Step 4: If, after you have been through the A & S Mc Mahon Group procedures and you are still not satisfied with our response, you can contact the Office of the Ombudsman. By law, the Ombudsman can investigate complaints about any of our administrative actions or procedures as well as delays or inaction in our dealings with you. The Ombudsman provides a free, impartial and independent dispute resolution service.

## A & S MC MAHON GROUP POLICY

A & S Mc Mahon Group is leading Rope Access Company in the Ireland & USA, committed to provide rope access services for inspection and maintenance.

The organization considers it to be of utmost importance to provide high quality services to its customers which contribute to the quality of life, protect the personal safety and health of its employees, and prevent environmental pollutions by least conforming to HAS & International requirements.

A & S Mc Mahon Group also endeavors through its activities and influences to improve and recognize its responsibilities to the environment of Ireland and beyond.

This shall be achieved by continually improving our integrated management system by:

- Committing to comply with current and future applicable legal and other regulations with respect to Environment, Health and Safety on all the inspection and maintenance services that we do by holding an up-to-date register of all applicable legislation and by monitoring compliance with this on a regular basis.
- Providing resources, investing in technology and developing necessary competence and awareness amongst our employees to contribute towards quality of workmanship, employee safety and preserving the environment.
- Setting Quality, Health, Safety & Environmental objectives and targets, ensuring it through periodic review and developing programs.
- Periodical review of our management system and taking appropriate actions in case of deviation from the established policies & programs.
- Communicating and understanding this policy at all levels of the organization and making it available to all interested parties upon request, including members of general public.
- All employees are responsible for implementing and complying with the rules and requirements for the safe conduct of operations and for the safe care and maintenance of any resources given to them for their safety and protection.
- A & S Mc Mahon Group values establish a foundation that uphold our company policies and provide a framework for responsible decision making.

### Our Values

- Customer Satisfaction
- Honesty & Integrity
- Safety & Environmental Responsibility
- Sustainability
- Continuous Improvement
- Involvement of People
- Equal Opportunities

## HEALTH & SAFETY POLICY

A & S McMahon Communications Limited T/A Rope Access Ireland, Working At Height & Mid-West Communications, recognises that health and safety plays a vital role in every activity we do, whether it be at high-level or at ground-level. We are committed to providing our clients with a highly professional service with safety as our first priority. All of our Rope Access technicians & Contractors are trained to IRATA, SPRAT & Rope Rescue standards and follow strict health and safety guidelines. Our equipment is routinely checked, marked and logged and all meet under European standards (ENs). We operate under strict IRATA; SPRAT & Rope Rescue Guidelines for safe working at height, originally published in 2006, the Guidelines have regulated the way in which rope access works should be carried out. The Guidelines also specify the usage of plant and equipment with rope access. Before every job, we provide clients with detailed method statements for any operation involving rope access and by identifying potential hazards through effective risk management. Under these strict rules each access technician is assessed for safety and competency by our in-House assessor. We are constantly monitoring and updating our safety policies to remain in line with ever changing HSA regulations. Through proper planning, education, training and supervision, hazards can be identified and avoided. A&S McMahon Communications Limited believes all risks can be mitigated to create a safe working environment for everyone. We believe our crews deserve the highest standard of safety Instructors have to offer. Each technician follows comprehensive safety guidelines for safety in accordance with our instructor's safety requirements for Quality Assurance, Safety, Documentation and Safe Working Practices.

## A & S MC MAHON GROUP ENVIRONMENTAL POLICY STATEMENT

A & S Mc Mahon Group Limited is committed to leading the industry in minimizing the impact of its activities on the environment.

The key points of its strategy to achieve this are:

- Minimized waste by evaluating operations and ensuring they are as efficient as possible.
- Minimized toxic emissions through the selection and use of its fleet and the source of its power requirement.
- Actively promote recycling both internally and amongst its customers and suppliers.
- Source and promote a Services range to minimize the environmental impact of both production and distribution.
- Meet or exceed all the environmental legislation that relates to the Company.
- Use an accredited program to offset the greenhouse gas emissions generated by our activities.

Signed by: *Adrian Mc Mahon*. Director

Signed by: Susan Mc Mahon. Director

## CULTURE

A & S Mc Mahon Group is a people organization and we are proud of our small company ethos. An open culture exists in our organization which encourages employees to express their ideas and opinions freely. As a service organization committed to enhancing our customers business, we continually improve our communication methods to ensure everyone can effectively contribute to the organizations objectives. Every employee is encouraged to contribute and get involved in all aspects of the organization. We believe every single employee plays an equally important part in our success - no one hesitates to pose questions directly. Our Company Values define our culture

## PRO-ACTIVITY

### BEING PROACTIVE IS OUR WAY OF LIFE

We are proactive; we take on our customers concerns and aim to follow them through to solutions. We enjoy new challenges and putting our knowledge and experience into practice.

## DIVERSITY

**THE DIVERSITY OF OUR PEOPLE IS OUR STRENGTH** Our approach to teamwork is to exploit our diversity, and this makes us different. We respect each other's individuality and talents. We promote ourselves, our values and the benefits of working with us, to our customers and to new employees

## PARTNERSHIP

### WE PARTNER WITH OUR CUSTOMERS

We listen very closely to our customers to understand their exact goals, and we act in a way that will help them achieve those goals. We make it clear and obvious that we're enthusiastically committed to partnering the customer & delivering a solution on time and to budget.

## SAFETY MANAGEMENT TEAM

### **Adrian Mc Mahon, CEO / Master Instructor Rope Access & First Responder**

Adrian started his career as a sub-contractor in 1999 and has worked for Irelands leading Telecommunications Companies. Adrian spent the early years doing installation work and transmission work. With a passion for climbing, rescue and emergency care, Adrian has committed his entire career to learning all aspics of climbing, rescue and emergency care all Adrian's skills are kept in line with all current practices. Adrian's qualifications are in; Rope Access & Rescue Level 3, PPE & Ladder Inspection, First Responder First Aid, Winching and Hauling, Tower Climbing & Rescue, Rooftop Safety & Rescue, Rope Rescue 1, MEWP ( Operator & Escape Systems ).

### **Jeffery Kavanagh, Operations Manager (Supervisor)**

Jeffrey has brought his own Technical experience to the company after spending seven years with Dell computers on pc repair. As a highly regarded employee the company he is the only Senior engineer other than the owner trained in all aspects of Day to Day Operations & Safety. Jeffrey's qualifications are in; Rope Access & Rescue Level 3, First Aid, Winching and Hauling, Tower Climbing & Rescue, Rooftop Safety & Rescue, MEWP ( Operator & Escape Systems ).

### **Mario Miotto, Medic & Master Instructor Rope Rescue**

Mario has a background in the Military, as a keen Outdoors enthusiast, active duty in the Water Search and Rescue Unit was inevitable, and this stemmed Rescue to be included. This was a catalyst to work within the Technical, Heights and Confined Space Rescue Environment and an Instructorship was awarded with the Outreach International Rescue Training Centre in Wales, along with Modules completed toward a Diploma from Coventry University in Specialist Rescue.

The Fire Services College in the UK was a final stage to completing the required training to accumulate all the above to fall within the umbrella of Emergency Response Certification.

## HEALTH & SAFETY

- A & S Mc Mahon Group, Adheres to the standard for Health & Safety Authority.
- The safety and health of all persons involved or affected by our operations is a fundamental value held by A & S Mc Mahon Group.
- Through a pervasive culture of safety backed by the latest safety equipment, leadership, training and support, we create an environment that encourages safety at all levels of the company.
- We maintain that every job can be completed safely and without injury, and we pass this philosophy onto our staff, subcontractors and suppliers. We are proud to have had this important aspect of our business.

## THE ROPE ACCESS PROGRAM

A rope access program must be built as an integrated system. The safety and efficiency of industrial rope access operations depend on an organization's commitment to successfully integrate four key components:

- Management systems
- Training systems
- Equipment management systems
- Qualified supervision

## A & S MC MAHON GROUP CORPORATE MANAGEMENT TEAM

**CEO/Owner.** – Adrian Mc Mahon S, L3

**Company Director & Accounts Manager.** - Susan Mc Mahon. I.A.T.I

**Company Accountant** - Declan O Callaghan. - F.C.C.A “Contracted”

**H&S Officer & Documentation**- John Curley “ Contracted”

**Training & Evaluation** - Mario MiottoRRI & Adrian Mc Mahon S,L3T

**Operations Manager** - Jeffrey Kavanagh S,L3

**Employment & Legal Law** – Rob Nolan Peninsulla “ Contracted”

## A & S MC MAHON GROUP TRAINING SYSTEM

Industry standards give performance and training criteria for employees performing rope access work. The certification system is divided into three levels. A specified amount of rope access experience is required to progress to the next level, and candidates generally receive about 32-40 hours of training to meet the performance criteria prior to their evaluation at each level. Following this training Employees are evaluated through a written exam and a field practical. Up Skilling & Evaluation Day is carried out every year quarter.

**Level I Technicians** (Authorized Workers) are qualified to work under appropriate supervision and must be able to inspect their equipment and safety systems.

**Level II Technicians** (Lead Technicians) have documented work experience and are qualified to rig more complicated systems and trained to perform a wider range of rescue techniques.

**Level III Technicians** (Safety Supervisors) have more documented experience and training and are responsible for the safety management of the job.

## A & S MC MAHON GROUP EQUIPMENT SYSTEM

An Equipment Manager is usually designated to maintain the equipment management system. Each piece of safety equipment is given a unique identifier and inspected before being placed into service. This unique identifier allows the equipment to be traced back to its date in service and inspection record. While each technician inspects his or her own equipment on a daily basis, periodic inspections (usually twice annually) are conducted and documented by the Equipment Manager.

Each piece of equipment must be compatible with the other components of the system. Without specific testing, compatibility isn't always obvious, especially when gear is used outside of the manufacturer's original intended purpose. Testing conducted by A & S Mc Mahon Group and its partners has shown that some equipment is especially sensitive to variations in rope structure and diameter, for example. The best way to make sure that your equipment is compatible is to test it yourself, get advice from a knowledgeable dealer, and/or seek independent testing data.

## A & S MC MAHON GROUP EQUIPMENT INSPECTORS

A & S Mc Mahon Group PPE & Equipment Inspection Team Are:

Mario Miotto – Adrian Mc Mahon – Jeffery Kavanagh

## A & S MC MAHON GROUP ROPE ACCESS SUPERVISION

Proper supervision is essential to the rope access safety management system. A certified Rope Access Supervisor (level III) is actually required on every rope access project site in order to maintain compliance with the SPRAT, IRATA & Rescue 3 systems. Ultimately, a properly qualified and certified Rope Access Supervisor, with the support of company management, should be able to identify and correct any gaps in the management systems, staff training, and equipment protocols to insure safe operations.

Typical On Site Team

2. Level 3 supervisors
1. Rope Rescue Technicians
2. First Responders
1. Medic/ Paramedic

## A & S MC MAHON GROUP JOB PLANING

Every job requires a specific safety plan or **job hazard analysis (JHA)** and rescue plan that should be prepared before beginning the job. A thorough plan includes:

- Details and contacts related to the work site
- Staff training and emergency contact information
- Communication methods
- Description of the work to be done, steps and tools needed, and the associated hazards
- Environmental hazards and methods to mitigate those hazards
- Detailed rescue plan, rescue equipment, and emergency services contact information.
- The details of the safety and rescue plans are fine-tuned by the Rope Access Supervisor at the job-site. The Supervisors must conduct a safety meeting with all members of the team prior to beginning every job and usually on a daily basis thereafter.
- New employees are given a site safety orientation prior to beginning work. All members of the team must sign that they have been briefed on the safety plan. Because rope access technicians work in difficult access locations, certified rope access professionals are trained to rescue their work-mates and get them to an area where definitive medical attention can be administered.



## A & S MC MAHON GROUP ENVIRONMENTAL SUSTAINABILITY

A & S Mc Mahon Group recognizes that good environmental management makes good long term business sense. Our company has an important contribution to make in reducing construction waste and increasing the re-use of construction materials. A & S Mc Mahon Group endeavor to reduce the impact of our activities on the environment by,

- Minimizing the risk of pollution
- Maximizing efficiency in operations
- Promoting sustainable operating practices

We consider that our ongoing contribution to excellence in environmental management will help our company and others to move forward towards a sustainable future.



## A & S MC MAHON GROUP QUALITY

A & S Mc Mahon Group takes Quality Assurance very seriously, thus ensuring that the company is professionally managed to internationally recognized standards and has an exemplary record with regard to its implementation of the company quality by management. We are committed to ensuring that process improvement is a part of every employee's job through setting standards and reviewing practice at regular intervals.



## A & S MC MAHON GROUP SUMMARY

In summary with strong management, training, equipment, and supervision systems, employers will find that A & S Mc Mahon Group delivers results unattainable by conventional means. Clients benefit with increased productivity, less facility downtime, fewer lost time incidents, and, in many cases, access to previously inaccessible areas.



## Building and Property Inspection, Height Safety and Remedial Engineering Services

We specialise in reaching workspaces that other companies can't, and getting critical jobs done safely and quickly. It can be at any height, in the most confined space, or in the most remote place. On a bridge, wind turbine, in a silo or down a shaft. That's what we do best. It does not matter that you are in Ireland, UK & USA, we can get to you. We are difficult installation specialists, and our rope access and rigging expertise have made us the first choice for organisations in Ireland, UK & USA. We provide inspection services, height safety services, remedial engineering and maintenance, protective coatings and specialist access, NDT Testing. Our combined skills can solve almost any problem in the construction and mining industries, in shipping, for owners' corporations and in the Power, Oil, and Gas Industries & Film & TV Services. We're flexible and fast, and we can design solutions for the most complex situations without the need to bring in more experts.

A & S Mc Mahon Group Have a lot of expert staff from all walks of life from such areas in;

- Rope Rescue Instructors
- Rope Access & Rescue Instructors
- Confined Space Entry Instructors
- Fire Safety & Chemical Instructors
- Paramedics
- Medics
- First Responders
- NDT Testers
- Engineering
- Rotor Blade Repair Instructors



A & S Mc Mahon Group is the all round Specialist Access, Inspection & Rescue Services. A & S Mc Mahon Group has the best team in the business and we will take on any challenge at any time or place with our Offices in Ireland & USA we are well placed in the global market.

## Inspection Services

### When you need answers and they aren't easy to find

You can't make good decisions without good data.

We use a highly experienced rope team guided by a professional engineer to inspect sites that others can't reach, and get you the vital information you need to plan repairs and protect your assets.

Our inspection reports meet Australian standards and industry best practice, and our investigations can detail what works are required, enabling you to get accurate pricing from the relevant trades; an important factor where access is difficult. We can also provide pricing ourselves.



#### COATINGS

We are licensed NACE coatings inspectors, and we have a large range of specialist equipment from Holiday testers to thickness and pull off testing. We're experienced in applying waterproof coatings and a wide range of industrial coatings to external structures.



#### CORROSION

Using thickness and map testing, visual data compilation and assessment analysis, we'll tell you the exact levels of corrosion in your steel structures.



#### WIND ENERGY

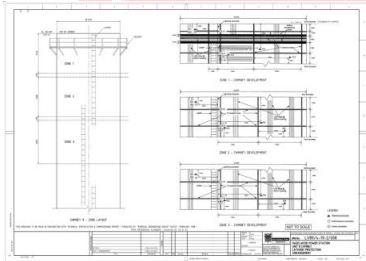
Inspection of towers and rotor blades is one component of the conditional maintenance of wind energy generating equipment according to DIN 31051. We inspect, document (photo &/or video), and prepare an assessment for determination of current conditions.

## Height Safety Services

### Make it safe, at any Height

Any drop over 2 metres is a safety issue today.

We can help you protect your staff from falling hazards with custom-designed handrails and walkways, ladders, static lines, safety/fall arrest harnesses, anchor points and access procedure systems. We engineer solutions to your situation and we're certified to install and test systems which are ready to use once fitted. We are also distributors of MSA safety products. We provide administrative controls and procedures manuals and can train your staff in the use of new safety systems, so you don't have to source someone else to do it.



#### CONSULTING

##### Compliance Assessments

Whatever your safe access problem, we provide you with a detailed assessment and a fully costed proposition to fix it.



#### ENGINEERING

The access systems we design are smart, safe and cost effective. Because we do our own engineering, we can incorporate catwalks and beams without the need to bring in external consultants. All our work is certified to structural design codes and OH&S standards, and underwritten by professional indemnity insurance.



#### INSTALLATION

We design abseiling anchor systems to suit the most complicated or remote structures – even old lighthouses. We solve common problems such as weak parapets and old roofs with smart solutions to load spreading, and structural upgrades where required.



## CONFINED SPACE ACCESS SYSTEMS

We can design a system that will turn your worst no go zones into accessible areas. That includes installing man winches and rigging, and training your staff to use them.



## Protective Coatings

### Stop the elements eating your assets.

Unchecked corrosion eats at your bottom line.

We have more than 15 years experience preparing, coating and testing all types of structures and façades in the most difficult environments.

Whatever your asset and wherever it is, we can protect it.



## ABRASIVE BLASTING

We blast and clean everything from ship holds to towers, and we can prepare steel for industrial coating in very remote locations using our 4wd-mounted industrial blasters.

## PHOTOGRAPHIC SURVEYS



## WIND TURBINE INSPECTION

Inspection of towers and rotor blades is one component of the conditional maintenance of wind energy generating equipment according to DIN 31051. We inspect, document (photo &/or video), and prepare an assessment for determination of current conditions.



## WIND TURBINE ROTOR BLADE REPAIR

According to the results of the preceding inspection and the criteria of the catalogue of measures necessary for the restoration of specification condition, repair work is planned and conducted. Work is done quickly and inexpensively with rope-access techniques for smaller damage as well as using mobile self-propelled climbing platforms for more extensive tasks.



## INDUSTRIAL COATINGS

Our industrial applicators work with all types of structures and façade, and we are experts at using Jotun, International and BASF products. Our quality control methods are second to none.



## WATERPROOFING MEMBRANES

We apply all types of waterproofing from bitumen membrane to applied waterproof coatings. And we're not just experts at waterproofing facades and roofs - balconies and basements come under our umbrella too.



## PAINTING

Our Painters work with all types of structures, and we are experts at using All products. Our quality control methods are second to none.

## Specialist Access

### “When you need Access, We know the ropes”

Heights, confined spaces, or remote areas. It doesn't matter where it is, we can get to it. We perform inspections, installations, applications, repairs, refurbishments and stabilizations on structures and facades that other companies won't touch. We're experts at twin ropes and lateral traverses. In fact we've built our reputation on knowing the ropes better than anyone else.



## ABSEILING

Our highly skilled rope crews use customized industrial abseiling equipment to solve the most difficult problems. And we work within your own OH&S framework to do it safely. We lead the field in risk assessment, work methodology, Job Safety and environmental analysis procedures.



## CONFINED SPACES

We are experts at working safely in lift shafts, chimney stacks, silos, ships holds and on scaffolds – any confined or hazardous space. We use positive respirator and industrial SCBA systems, gas detection, dead man alerts and live radio/video systems to protect our crew - and your assets.



## RIGGING

Our specialist riggers can put up loads of up to 150kg anywhere, at anytime.

And our advanced riggers can install longer run systems, including specialist winch systems, wherever you need them and however challenging the job.

Rigging knowledge and experience are undoubted two of the most essential factors to guarantee a safe installation of structures and equipment. At A & S Mc Mahon Group all our rigging staff and contractors have undergone extensive training and are provided with fully inspected rigging equipment. Our crews are experienced in rooftop, tower and building installations/maintenance of all types. All A & S Mc Mahon Group projects are thoroughly calculated, engineered, and performed with the highest degree of coordination, safety, and professionalism.



## Remedial Engineering.

**We can get to it - and we can fix it.**

Accessing difficult sites is just the start. Once there, we can repair and maintain all types of plant and machinery and make safe all structures and facades. Whatever your problem, we have the experience and the equipment to deliver the whole solution.



### FAÇADE REFURBISHMENT

We cover all aspects of external refurbishment from repairs to coatings.



### FAÇADE MAKE SAFES

We respond quickly to remove unsafe or dislodged materials from your building façade, and arrange for gantries, scaffolds, booms and all permits. We repair or install downpipes, rain heads, or flashings that plumbers can't reach. We also fabricate parts so you are only dealing with one contractor. When highly specialised tradesmen are needed, we can set up specialised rigging and temporary safety lines for other contractors.



### CONCRETE REPAIRS

We are experienced at repairing delimitation, spalling and cracks in concrete wherever they appear, and performing core drilling wherever needed. We restore structural integrity to concrete walls, slabs and columns with crack injection, and we can boost structural performance with carbon fibre or composite upgrades. We have a long relationship with BASF, and we're highly experienced at applying surface compounds to protect concrete from the elements.





## STABILISATION

## ROCK FALL MESHING INSTALLATION

We're experts at adapting rock fall protection meshing to stabilise chimneys and concrete structures. When it comes to Cliffs, Bridges, embankments and revetments, we also do top and bottom anchoring, & Meshing, surface scouring and traffic management. We apply a combination of engineering knowledge and site experience to deliver practical solutions when installing proprietary and purpose built rock fall defences.

## NDT Testing



### CONVENTIONAL NON-DESTRUCTIVE TESTING

- Visual Examinations
- Remote Visual Inspections
- Magnetic particle Dye –Penetrant
- Radiography
- Ultrasonic
- Eddy Current Inspection



### WELDING INSPECTION

- Welding Inspection
- Third Party Vendor Inspection
- FAT Inspections



### METALLURGICAL SERVICES

- Field Replication: Creep, Sigma Phase, Grain Size & Crack Evaluation.
- Hardness Testing
- PMI Positive Material identification.
- Macro Examination



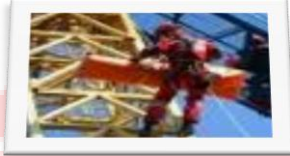
### ADVANCED NON-DISTRUCTIVE EXAMINATION

- TOFD - Time Of Flight Diffraction
- Phased Array Ultrasonic's
- HIC/SOHIC Inspections
- Corrosion Mapping
- HTHA – High Temperature Hydrogen Attack
- Long Range Ultrasonic's
- Eddy Current (Surface & Tube Inspection)
- ACFM – Alternating Current Field Measurement.



## Rescue Cover

We provide effective rescue cover for all work at height and confined space entry tasks. Our rescue co-coordinators' and technicians have collectively logged thousands of hours on rescue training and rescue operations.



### **Rescue services available include**

- Risk assessment, Planning and Training
- Hazard identification and rescue planning
- Rescue equipment identification and set-up
- Training for rescue

### **Rescue Support**

- Provision of on-site rescue co-coordinators
- Provision of rescue teams to industry
- Provision of rescue teams for events

## Film & TV Services

Filming in potentially dangerous situations puts extra stress on crew, production team and artists alike. A & S Mc Mahon Group provides Specialist Access; Safety & Rescue cover For Film/TV protection at height leaving teams free to concentrate on filming.

We provide rope access for filming at height or in difficult to reach or potentially dangerous surroundings such as treetops, cliffs or high platforms, overseeing all of the rope access related activities, including rope and cable rigging, and safety and rescue cover and supervision. We also supply rope access solutions for the stage, including sound & lighting positioning, rigging and access solutions.

We oversee all of the height related activities during filming. We also supply rope access solutions for the stage, including sound & lighting positioning, rigging and access solutions as well as qualified Rope Rescue and Medical Personnel we are ready for any situation that may arise.

**RAI HAS Emergency Medical and Rescue Practitioners staff with experience in;**

- Wilderness Medic, First Responders, Advanced Paramedic's
- Rope Rescue Instructors, Rope Rescue Technicians



## Academy Training Services

The following courses are available and will be tailored to your requirements:

### Course - Description.

**WAHA1** - PPE End User Training

**WAHA2** - Anchor Placement

**WAHT3** - Leaning Ladder & Step Ladder Training

**WAHA4** - Roof Top Safety Flat & Pitch Roof

**WAHA5** - Mast & Tower Climbing and Rescue

**WAHA6** - Mast & Tower Climbing and Rescue Supervisor

**WAHA7** - Evacuation from Work Platforms

**WAHA8** - Work at Height

**WAHA9** - Wind Turbine Generator Working at Height & Rescue

**WAHA10** - Wind turbine Rotor Blade Inspection

**WAHA11** - Wind turbine Rotor Blade Professional Repair

**WAHA12** - Safety Management Working at Height with Personal Fall Protection Equipment

**WAHA13** - SPRAT level 1

**WAHA14** - SPRAT level 2

**WAHA15** - SPRAT level 3

**WAHA16** - Rope Rescue Operator

**WAHA17** - Rope Rescue Supervisor

**WATA18** - Rope Rescue Instructor

**WATA19** - Larkin Rescue Product Training

**WAHA21** - Rolegliss Product Training

**WAHA 21** - Confined Space Entry and Rescue

**WAHA 22** - Law enforcement Work at Height Operator

**WAHA 23** - Law enforcement Work at Height Supervisor

**WAHA 24** - Fire Fighting Prevention Basic

**WAHA 25** - Fire Fighting Prevention Fire Warden

**WAHA 26** - Chemical Training

**WAHA 27** - Occupational First Aid Fetac Level 5

**WAHA 28** - Manual Handling Fetac Level 6

**WAHA 29** - Tower Crane Rescue

**WAHA 30** - Hazardous Area Response Team Safe Work at Height and Rescue Training Operator

**WAHA 31** - Hazardous Area Response Team Safe Work at Height and Rescue Training Supervisor  
Trainer

**WATA32** - Self Escape Systems MEWP




## CONTACT INFORMATION


### A & S Mc Mahon Group Head Quarters


 **A & S Mc Mahon Group**

Crusheen, County Clare,  
Ireland, ROI.

 **HQ +353656890990**

 **IRL Mobile: +353872474104**


 **UK: Mobile: +447528054999**


 [Email Irish Office Click Here](#)

### A & S Mc Mahon Group USA Sub Office

 **A & S Mc Mahon Group**

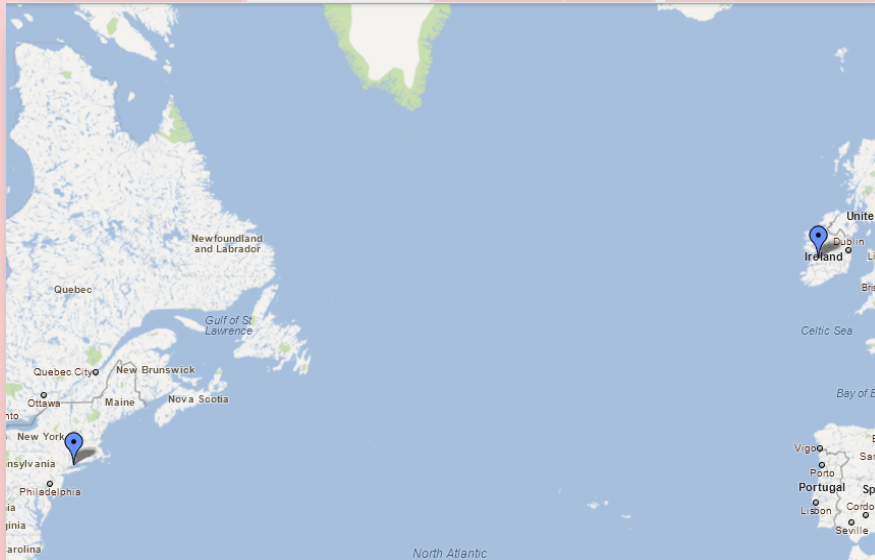
54 Adams St, Bridgeport, Fairfield, Connecticut, 06607,  
United States.

 **US Mobile Coming Soon**

 [Email US Office Click Here](#)



[WWW.AANDSMCMAHONGROUP.COM](http://WWW.AANDSMCMAHONGROUP.COM)



-WIND ENERGY-



-FILM & TV -



-NDT TESTING -



-TRAINING-