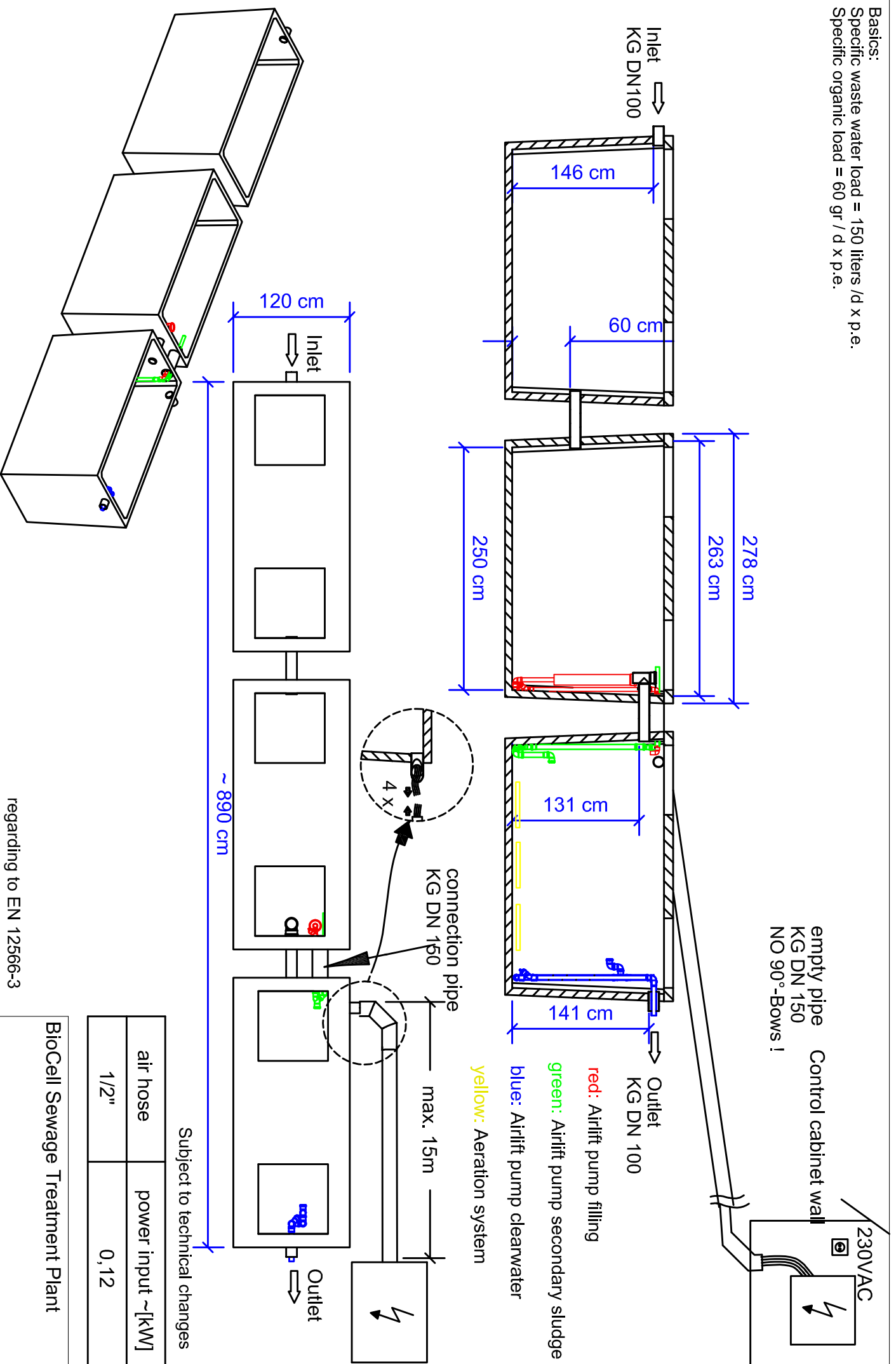


Basics:
 Specific waste water load = 150 liters /d x p.e.
 Specific organic load = 60 gr / d x p.e.



air hose	power input ~[kW]
1/2"	0,12

BioCell Sewage Treatment Plant

regarding to EN 12566-3

Copyright at PPU

www.biocell.ie

www.clearfox.de

Please note: All our drawing are in property. All rights reserved. Duplication only with prior approval of PPU.

Dat.: Zeichnung_Bauweise_Beton_TEG_10-12EW_SRR_E-AK

Datum: 13.06.2012

DIN A4

gez.: ppo

M